



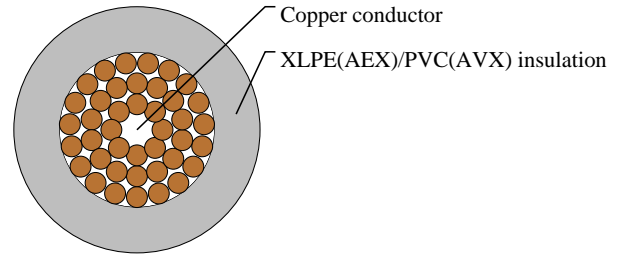
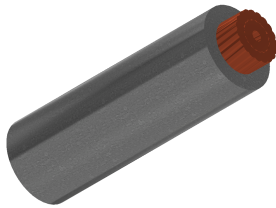
# Caledonian

Automotive Cables

www.caledonian-cables.com

marketing@caledonian-cables.com

## AEX-AVX 1C3.0



## APPLICATIONS

This XLPE insulated single-core cable is used for automobiles, motorcycles and other motor vehicles

## STANDARDS

JASO D 608-92

## CABLE CONSTRUCTION

Conductor: Cu-ETP1 according to JIS C3102

Insulation: XLPE (AEX)

Crosslinked PVC (AVX)

Standard Compliance: JASO D 608-92

## PHYSICAL AND THERMAL PROPERTIES

Operating temperature: -40 °C to +120 °C (AEX)

Operating temperature: -40 °C to +100 °C (AVX)

## DIMENSION AND PARAMETERS

No. of Cores × Cross-sectional Area	No. and Dia. of Wires	Diameter of Conductor (max.)	Nominal Insulation Thickness	Overall Diameter (min.)	Overall Diameter (max.)	Approx. Weight	Electrical Resistance at 20°C (max.)
No. × mm <sup>2</sup>	no./mm	mm	mm	mm	mm	kg/km	MΩ/m
1×3.0	41/0.32	2.4	0.7	3.8	4.1	38	5.6